



## CSD - Capsule Sorting Device

An **automatic capsule sorter** offers significant advantages by reducing operational costs, increasing sorting accuracy, and providing the flexibility to handle various capsule sizes. It streamlines the sorting process, eliminates defective capsules, and minimizes contamination risks, ensuring only the highest quality capsules proceed to packaging and sale.

Our unique technology is a perfect combination of **compactness, efficiency, and cost-effectiveness**. After being polished, capsules enter the sorting machine where they first pass through a rotating drum to sort out any diameter-related deformations (split, crushed, and telescoped capsules). The capsules then travel through channels that sort each capsule by weight (empty, open, and low-weight-filled capsules).

### KEY BENEFITS

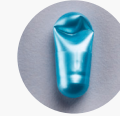
- Compact & Ergonomic design
- Plug & Play
- Fast (dis)assembly (no tools / mechanical adjustments required)
- Available up to OEB5 applications
- FDA and CE compliant
- cGMP-compliant bene



## SORTING



Split capsules



Crushed capsules



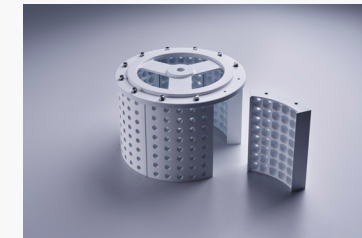
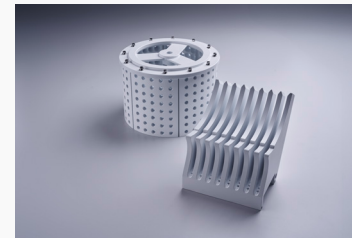
Open capsules



Improperly closed or bend



Empty capsules & low-weight-filled capsules



## TECHNICAL SPECIFICATIONS

Production output (size 0)	Up to 180.000 caps/h
Production output (size 4)	Up to 250.000 caps/h
Available sizes	From 000 to 5
Dimensions	577mm (H) x 330mm (L) x 194mm (w)
Outlet Height	1640 - 1240 - 840 - 440 mm
Available as	integrated version (with iCaps & eCaps)
	standalone version
Drum rotation speed	+/-25 rpm
Weight	30 Kg
Power supply	100 – 240 V AC
Power consumption	170W
Compressed air consumption	30 to 60L/min
Compressed air pressure	6-8 bars
Compressed air connection	QS8 (standalone version)
	N/A (integrated version)
Protection rating	IP65
Occupational Exposure Band	OEB3 up to OEB5 (WIP)
Product contact part	Aluminum + PTFE Coating